

**From:** [Barrett Daliah](#)  
**To:** [Chenier Pierre](#)  
**Subject:** Fwd: Princess Hall Plan  
**Date:** 05 August 2022 11:05:22  
**Attachments:** [Call\\_point\\_plan.png](#)  
[Fire\\_exist.png](#)  
[Amended Plan.png](#)

---

For info

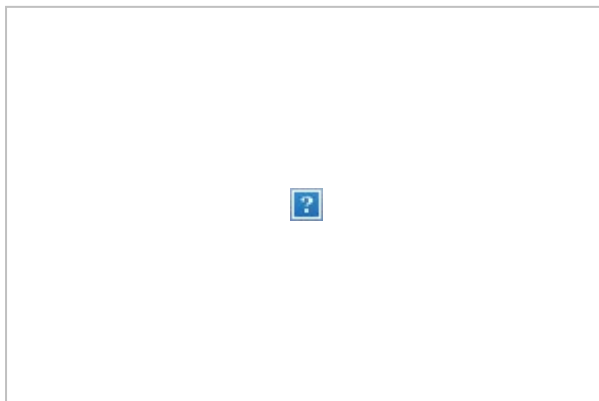
Get [Outlook for Android](#)

---

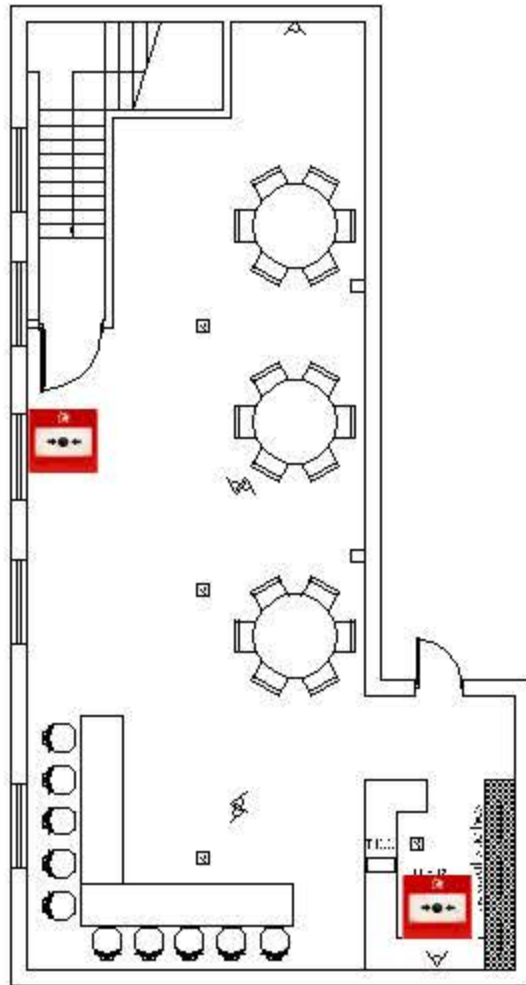
**From:** Daniel Stegariu <>  
**Sent:** Friday, 5 August 2022, 10:46  
**To:** Haringey Building Control <Control.HaringeyBuilding@haringey.gov.uk>; Barrett Daliah <Daliah.Barrett@haringey.gov.uk>  
**Subject:** Fwd: Princess Hall Plan

----- Forwarded message -----

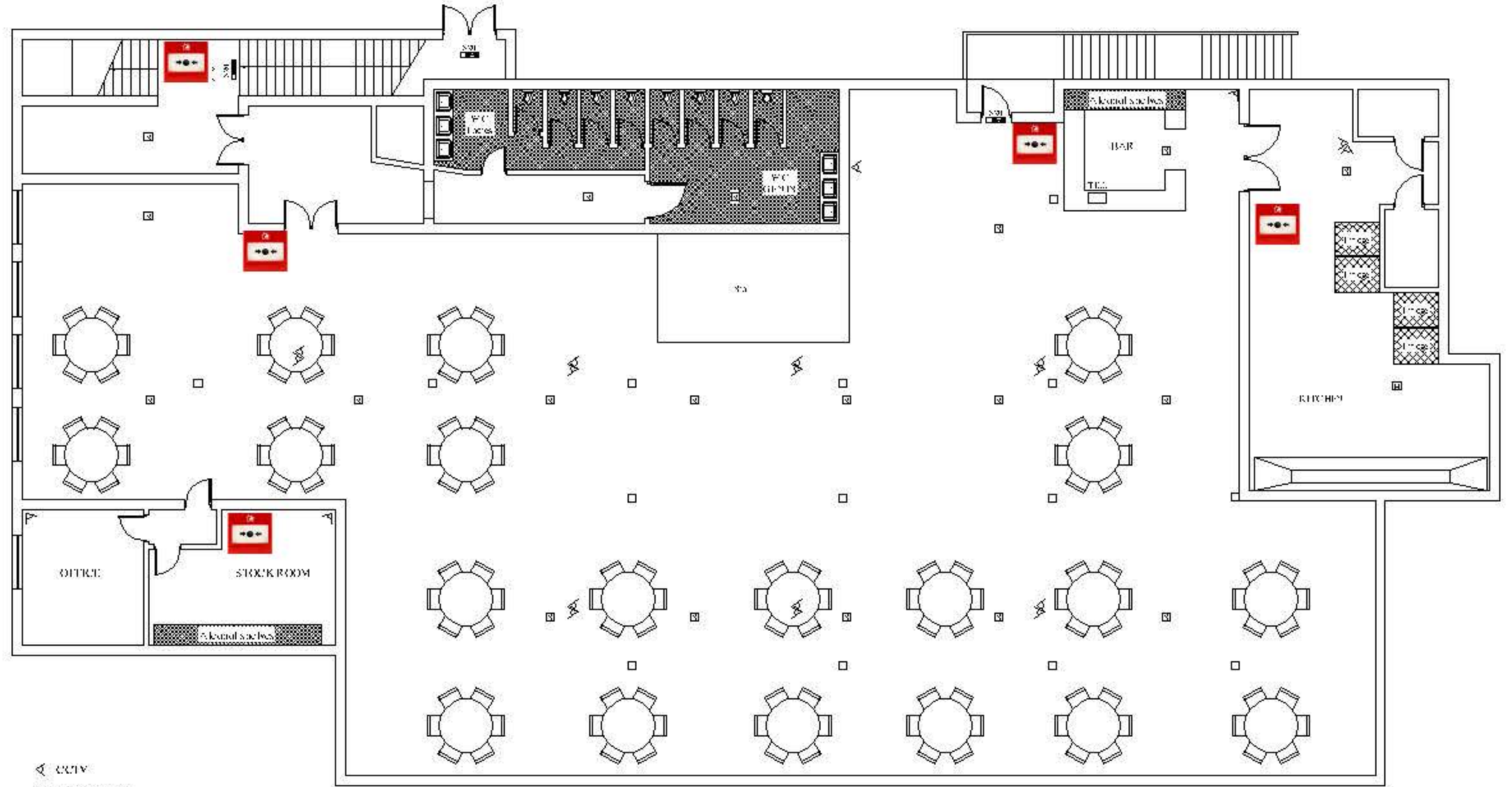
**From:** <[info@tecsolution.co.uk](mailto:info@tecsolution.co.uk)>  
**Date:** Friday, August 5, 2022  
**Subject:** Princess Hall Plan  
**To:**








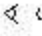


SECOND FLOOR



FIRST FLOOR

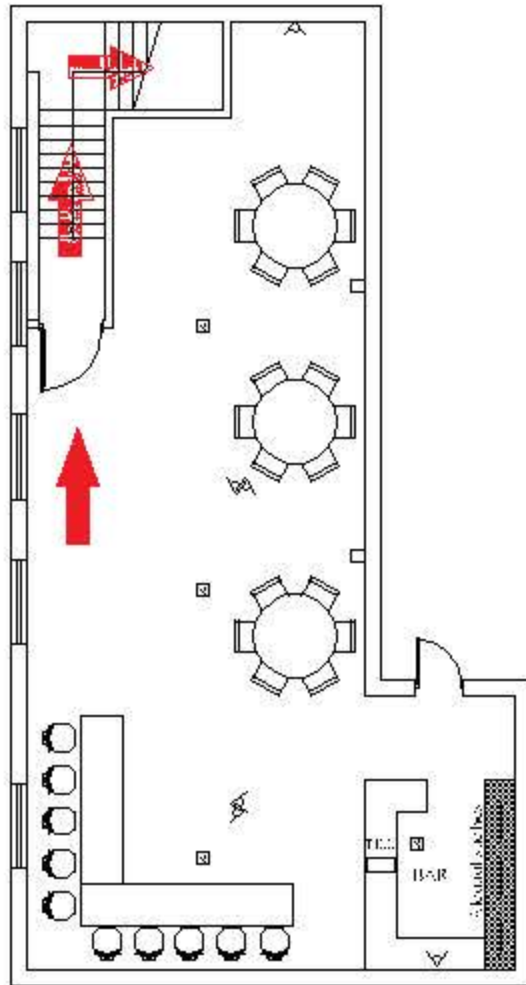


LEGEND

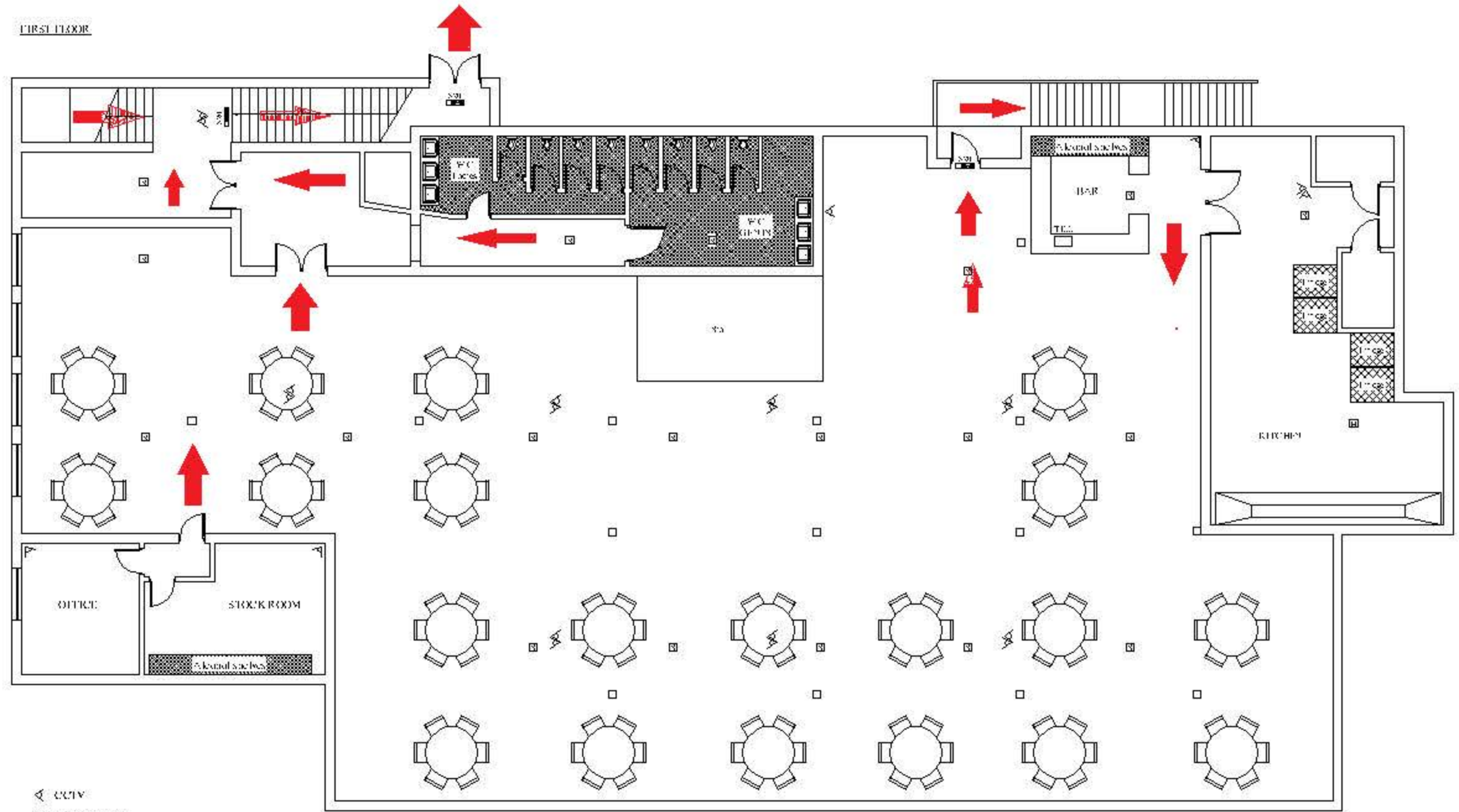
-  ALCOHOL
-  WC AREA
-  FRIGES
-  HEAT DETECTOR
-  SMOKE DETECTOR
-  EXIT
-  FIRE ESCAPE KEEP CLEAR
-  INTERNALLY ILLUMINATED FIRE ESCAPE SIGN (BS 5266)

# FIRE ESCAPE ROUTE

SECOND FLOOR



FIRST FLOOR

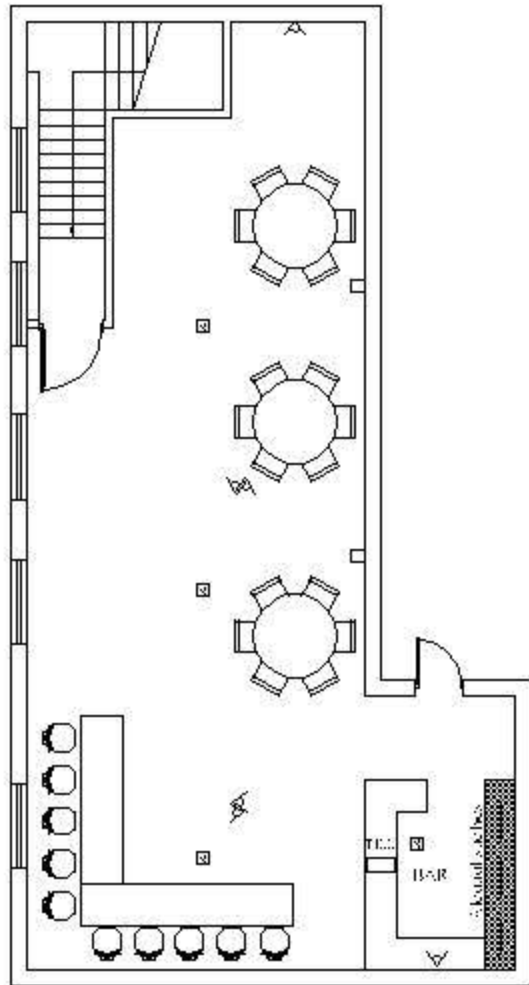


**LEGEND**

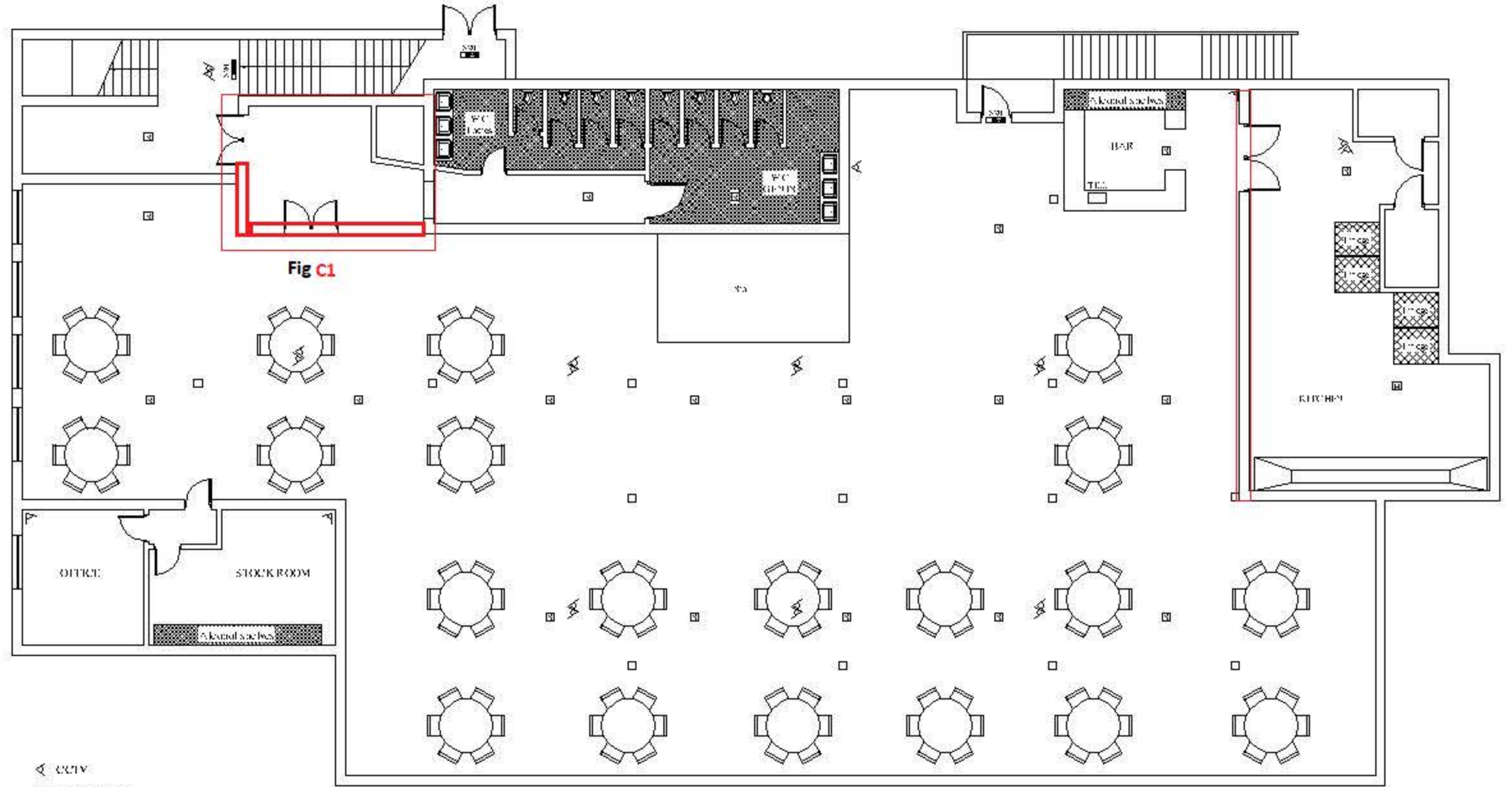
- |   |         |   |                 |   |  |
|---|---------|---|-----------------|---|--|
|  | ALCOHOL |  | HEALTH DETECTOR |  | EXIT   |
|  | WC AREA |  | SMOKE DETECTOR  |  | 520 FIRE ESCAPE<br>KEEP CLEAR                        |
|  | FRIGES  |   |                 |  | INTERNALLY ILLUMINATED<br>FIRE ESCAPE SIGN (BS 5266) |

In the event of fire, follow **RED Arrow**



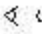





SIXTH FLOOR



FIRST FLOOR



LEGEND

- |   |         |   |                 |   |  |
|---|---------|---|-----------------|---|--|
|  | ALCOHOL |  | HEALTH DETECTOR |  | EXIT   |
|  | WC AREA |  | SMOKE DETECTOR  |  | 5.20 FIRE ESCAPE<br>KEEP CLEAR                       |
|  | FRIGES  |   |                 |  | INTERNALLY ILLUMINATED<br>FIRE ESCAPE SIGN (BS 5266) |

Notes:

Fig C1. is fire compartmentation is the sub-division of main area into smaller sections to achieve 60 min fire rating with the use of fire resisting construction, preventing the spread of smoke and fire into stairs which is primary EXIST for second floor occupants